

JUGANU
BRIGHTER

Líder de Mercado em Smart lighting

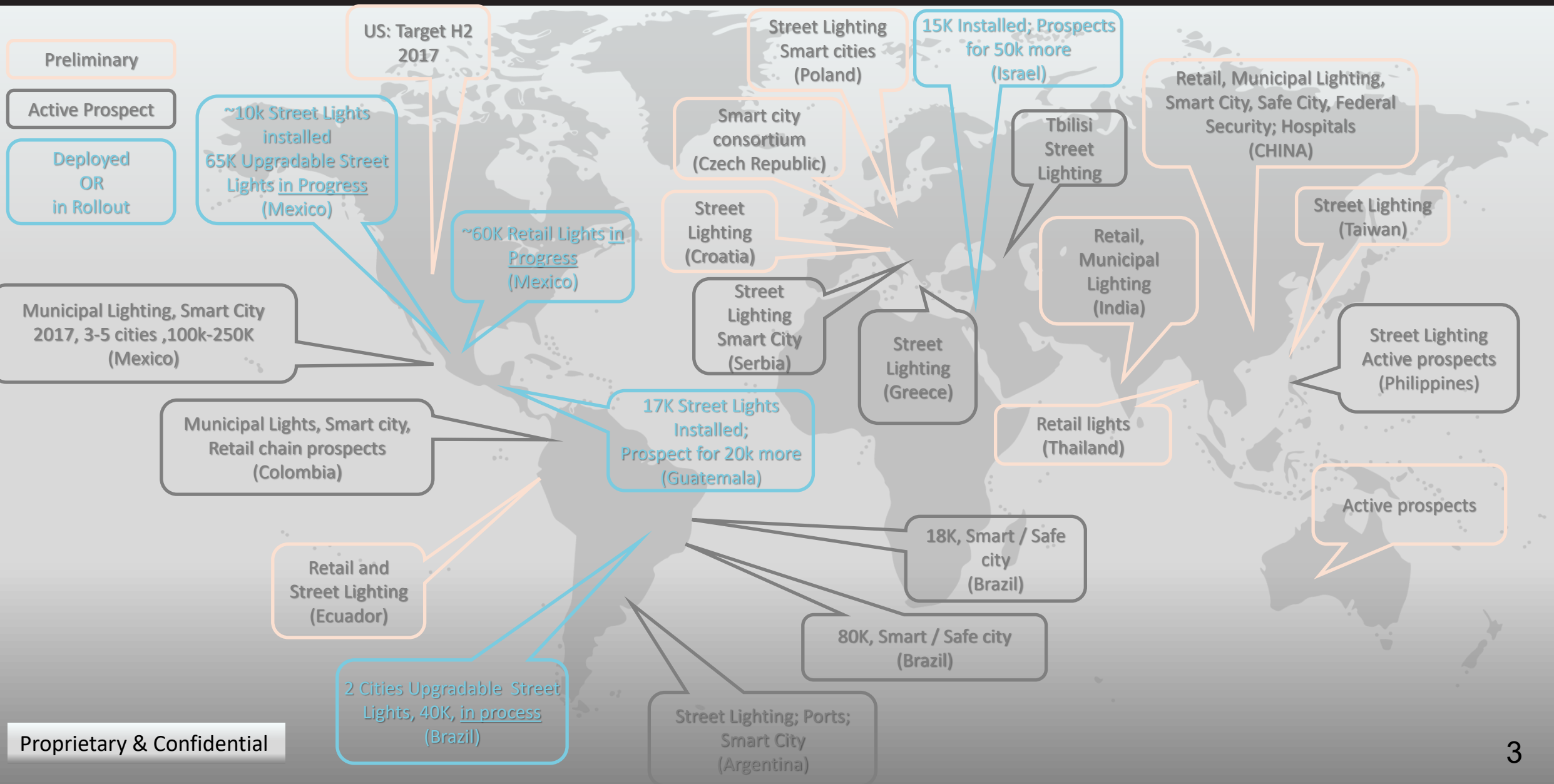


Principais questões de Smart city

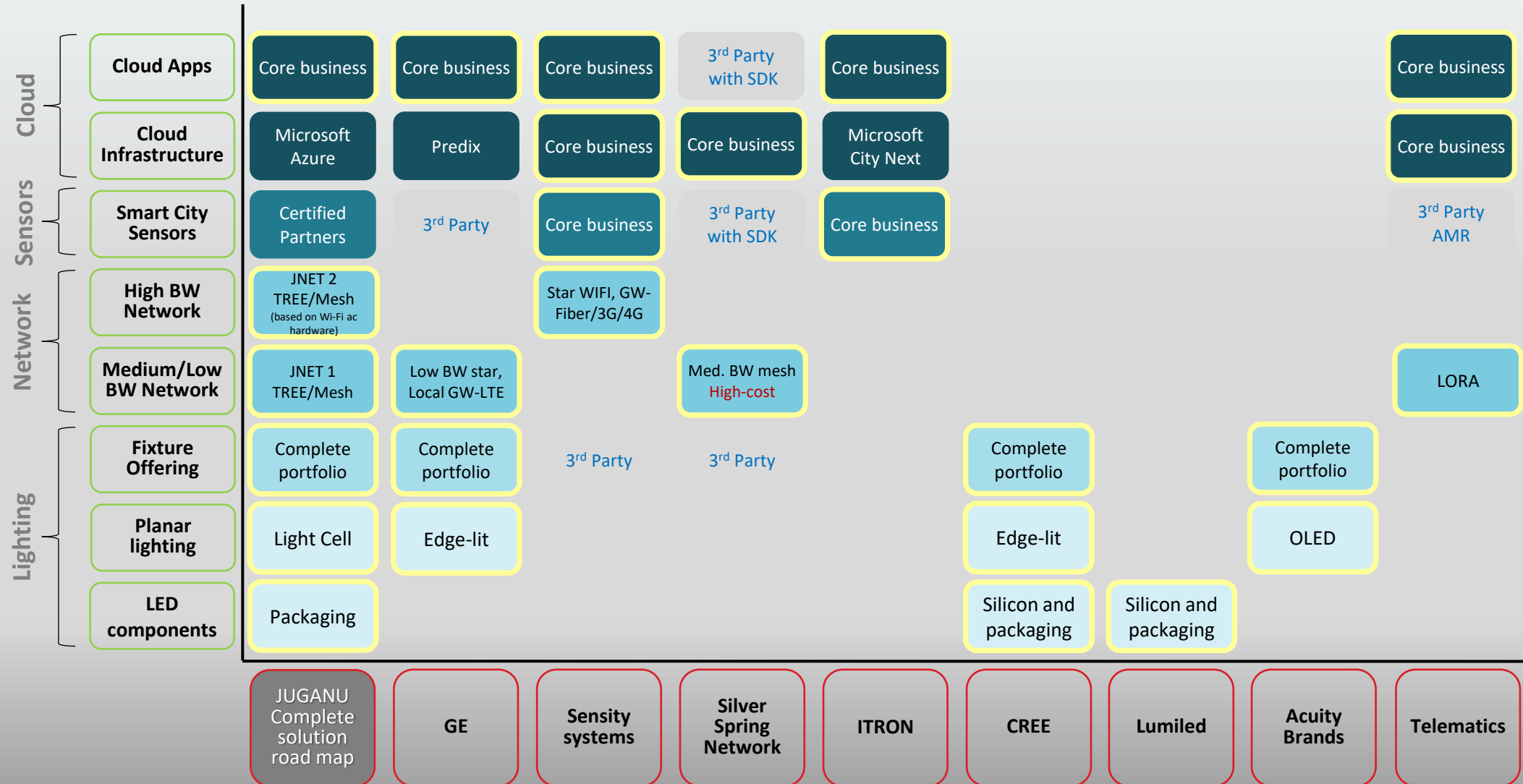
- Enorme Mercado, mas como podemos gerar receitas nesse mercado?
- Como podemos trafegar dados sem “conversar” com milhares de tecnologias proprietárias?

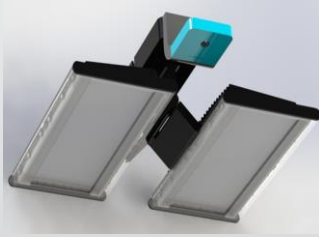
A resposta é SMART LIGHTING





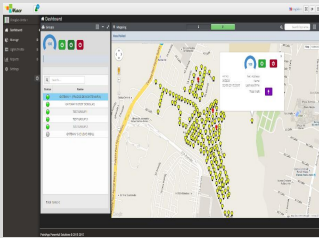
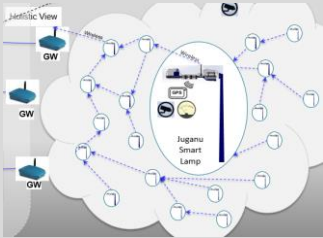
Cenário Competitivo



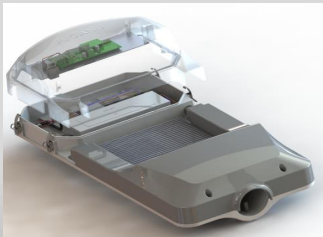
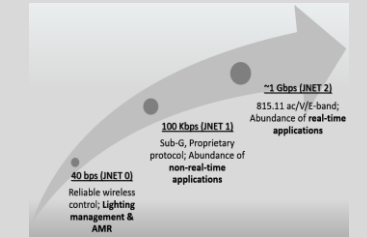


Smart city
Video, Audio, 4G/5G, Wi-Fi, Medidores, Sensores, Serviços

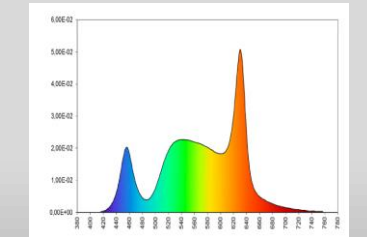
Sensors & Applications
+
Cooperation with 3rd parties



Varejo Inteligente
Sistema de Vídeo integrado, Wi-Fi, serviços



Tecnologia de Iluminação
Controle de espectro, cooling, Óptica e Proteção

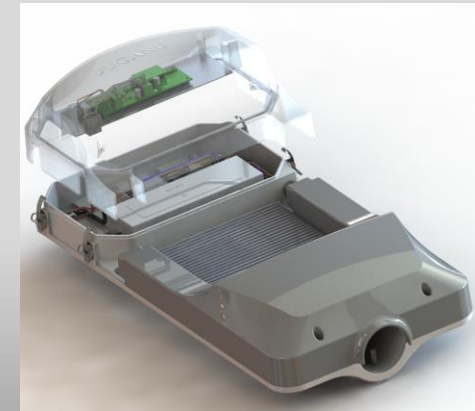


- Luminárias JLED:

- 80% – 85% de economia de energia
- 10 anos de garantia
- Insignificante e leve redução de 1% ao ano na vida útil da luminária por ano (Menor redução do mercado).
- Uniformidade de Luz Incomparável.
- Controle de Espectro; Alto R9

- Luminárias JLED:

- Cada luminária inclui comunicação wireless e GPS.
- Luminárias totalmente gerenciada e controladas desde uma luminaria até dezenas de milhares de luminárias.

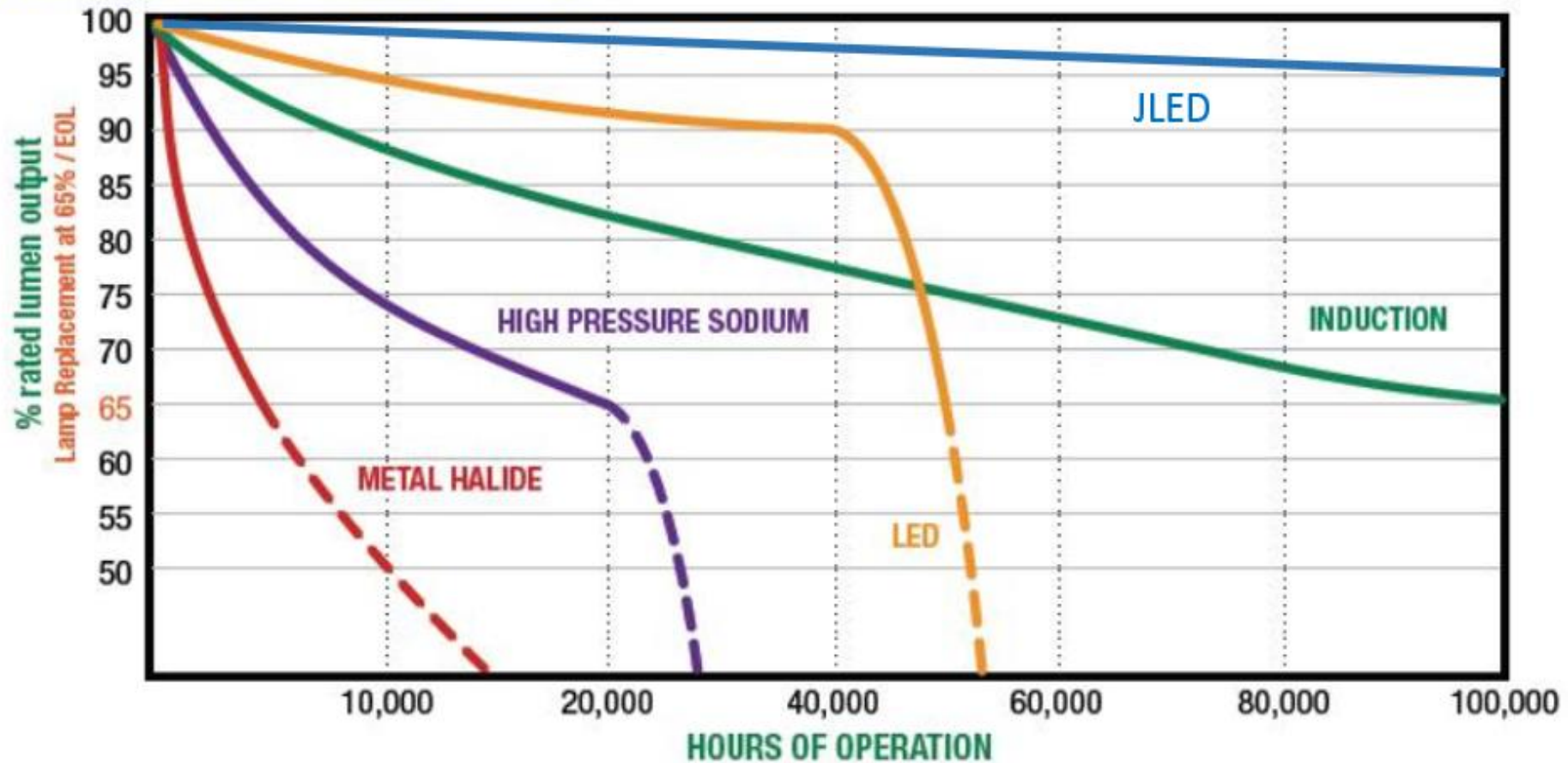


Luminárias e retrofits



Comparação de tecnologia: MH, HPS, LED, JLED

ESTIMATED LUMEN MAINTENANCE



Telas de Interface do usuário com luminárias externas

Dashboard

Groups

- 100
- Power On
- Power Off

Search by name

| Status | Name |
|--------|-----------------------------------|
| ON | GATEWAY 1 (PRADOS DE MONTE MARIA) |
| ON | GATEWAY 8 (TEST DOUGLAS) |
| ON | TEST GROUP 1 |
| ON | TEST GROUP 3 |
| ON | TEST GROUP 2 |
| ON | GATEWAY 6 (JULIÃO REAL) |

Total items: 6

Map: Shows a street map with numerous yellow pins representing external luminaires. A yellow line highlights a specific route or area on the map.

PointApp Powerful Solutions © 2013-2015

Dashboard

Groups

- 100
- Power On
- Power Off

Search by name

| Status | Name |
|--------|-----------------------------------|
| ON | GATEWAY 1 (PRADOS DE MONTE MARIA) |
| ON | GATEWAY 8 (TEST DOUGLAS) |
| ON | TEST GROUP 1 |
| ON | TEST GROUP 3 |
| ON | TEST GROUP 2 |
| ON | GATEWAY 6 (JULIÃO REAL) |

Total items: 6

Map: Shows a street map with numerous yellow pins. A popup window titled "Read failed" is displayed over the map, showing a power status icon and a timestamp.

PointApp Powerful Solutions © 2013-2015

Manage → Fixtures

Search by name

| Status | Name | Edit | Delete |
|--------|-----------------------------------|--------|----------|
| ON | GATEWAY 1 (PRADOS DE MONTE MARIA) | [Edit] | [Delete] |
| ON | GATEWAY 8 (TEST DOUGLAS) | [Edit] | [Delete] |
| ON | TEST GROUP 1 | [Edit] | [Delete] |
| ON | TEST GROUP 3 | [Edit] | [Delete] |
| ON | TEST GROUP 2 | [Edit] | [Delete] |
| ON | GATEWAY 6 (JULIÃO REAL) | [Edit] | [Delete] |

Total items: 6

| Number | Name | Protocol | Light Level | Status | Edit | Delete | Lights On | Lights Off | Action Results |
|--------|--------|----------|-------------|--------|--------|----------|-----------|------------|----------------|
| 41110 | 355261 | J.FD 78 | 100 | ON | [Edit] | [Delete] | [ON] | [OFF] | |
| 41786 | 355176 | J.FD 78 | 100 | ON | [Edit] | [Delete] | [ON] | [OFF] | |
| 37536 | 355178 | J.FD 78 | 100 | ON | [Edit] | [Delete] | [ON] | [OFF] | |
| 41174 | 355179 | J.FD 78 | 100 | ON | [Edit] | [Delete] | [ON] | [OFF] | |
| 44655 | 355181 | J.LED 28 | 100 | ON | [Edit] | [Delete] | [ON] | [OFF] | |
| 41285 | 355182 | J.LED 28 | 100 | ON | [Edit] | [Delete] | [ON] | [OFF] | |
| 41304 | 355183 | J.LED 28 | 100 | ON | [Edit] | [Delete] | [ON] | [OFF] | |
| 41152 | 355209 | J.LED 28 | 100 | ON | [Edit] | [Delete] | [ON] | [OFF] | |
| 39987 | 355185 | J.LED 28 | 100 | ON | [Edit] | [Delete] | [ON] | [OFF] | |
| 41207 | 574 | J.LED 28 | 100 | ON | [Edit] | [Delete] | [ON] | [OFF] | |
| 80272 | 355177 | J.LED 28 | 100 | ON | [Edit] | [Delete] | [ON] | [OFF] | |
| 80376 | 163661 | J.FD 78 | 100 | ON | [Edit] | [Delete] | [ON] | [OFF] | |
| 80318 | 163645 | J.FD 78 | 100 | ON | [Edit] | [Delete] | [ON] | [OFF] | |
| 80307 | 163636 | J.FD 78 | 100 | ON | [Edit] | [Delete] | [ON] | [OFF] | |

Total items: 268

PointApp Powerful Solutions © 2013-2015

Manage → Commands

Search by name

| Status | Name |
|--------|-----------------------------------|
| ON | GATEWAY 1 (PRADOS DE MONTE MARIA) |
| ON | GATEWAY 8 (TEST DOUGLAS) |
| ON | TEST GROUP 1 |
| ON | TEST GROUP 3 |
| ON | TEST GROUP 2 |
| ON | GATEWAY 6 (JULIÃO REAL) |

Total items: 6

Commands:

- Light On
- Light Off
- On Lamp
- Back Light
- On Up Time
- Back on demand
- Light On (20)
- Set Time
- Get Light Power

Action End

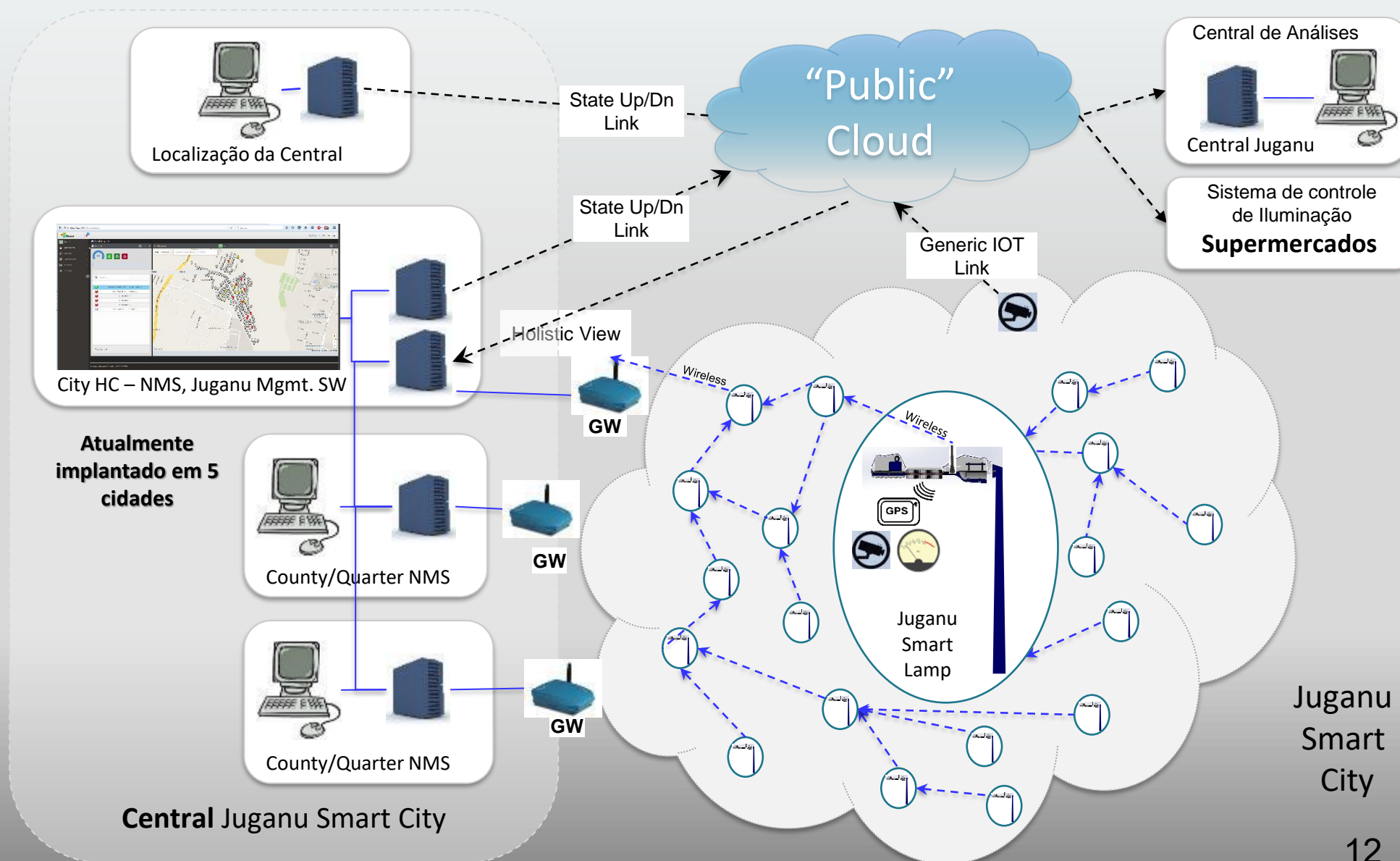
| Number | Name | Protocol | Light Level | Status | Lights On | Lights Off | Action Results |
|--------|--------|----------|-------------|--------|-----------|------------|----------------|
| 80272 | 202177 | J.LED 28 | 100 | ON | [ON] | [OFF] | Sunday 22:40 |
| 80276 | 162981 | J.LED 28 | 100 | ON | [ON] | [OFF] | Sunday 22:40 |
| 80270 | 162940 | J.LED 28 | 100 | ON | [ON] | [OFF] | Sunday 22:42 |
| 80269 | 162926 | J.LED 28 | 100 | ON | [ON] | [OFF] | Sunday 22:42 |
| 80264 | 162922 | J.LED 28 | 100 | ON | [ON] | [OFF] | Sunday 22:41 |
| 80264 | 751486 | J.LED 28 | 100 | ON | [ON] | [OFF] | Sunday 22:18 |
| 80275 | 162920 | J.LED 28 | 100 | ON | [ON] | [OFF] | |
| 80212 | 162829 | J.LED 28 | 100 | ON | [ON] | [OFF] | |
| 80122 | 162842 | J.LED 28 | 100 | ON | [ON] | [OFF] | |
| 80078 | 162832 | J.LED 28 | 100 | ON | [ON] | [OFF] | |

PointApp Powerful Solutions © 2013-2015

Rede, Gerenciamento e Serviços JNET

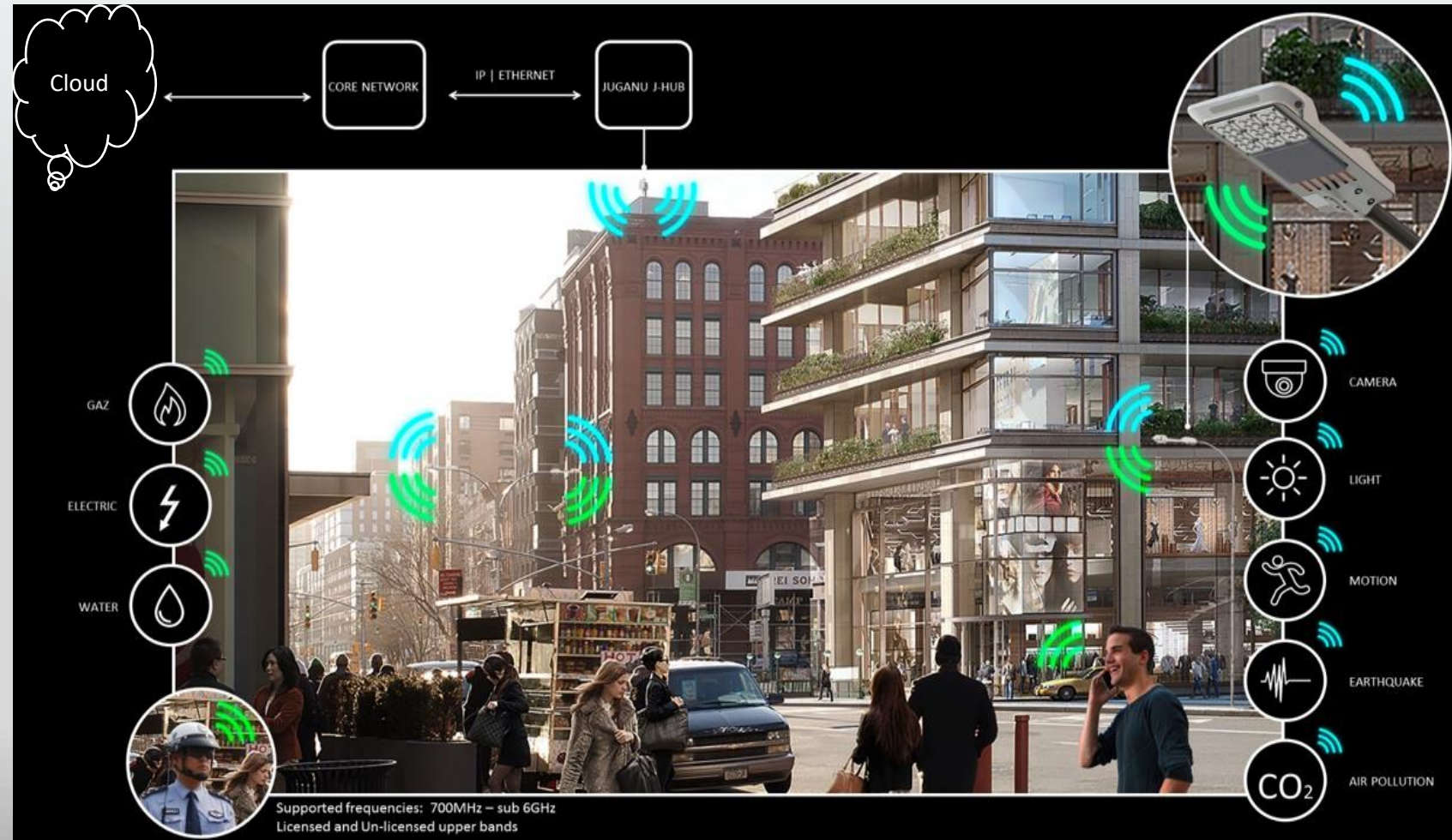
Plataforma inteligente: JLED funciona como uma plataforma a qual podem ser adicionados serviços agregados

- As luminárias Juganu são plataformas atualizáveis e que podem ter serviços acrescentados tais como: medidores de consumo, câmeras e sensores
- JNET 1 – Rede própria da Juganu de comunicação de rede sem fio RF e GPS que está integrado em cada lâmpada
- Gateway: até 10.000 lâmpadas por gateway: fácil implantação e fácil manutenção
- Segurança: compatível com os mais altos padrões da indústria



Solução JNET 2 para plataformas de Smart City

- Centenas de Luminárias JNET conectadas via wireless através da solução *JNET 2*
- Câmeras Full HD 30fps em cada luminaria. Disponibilização de Serviço de Wi-Fi/4G/5G através das luminárias
- Sensores de Smart city / Leitura de Medidores de Energia



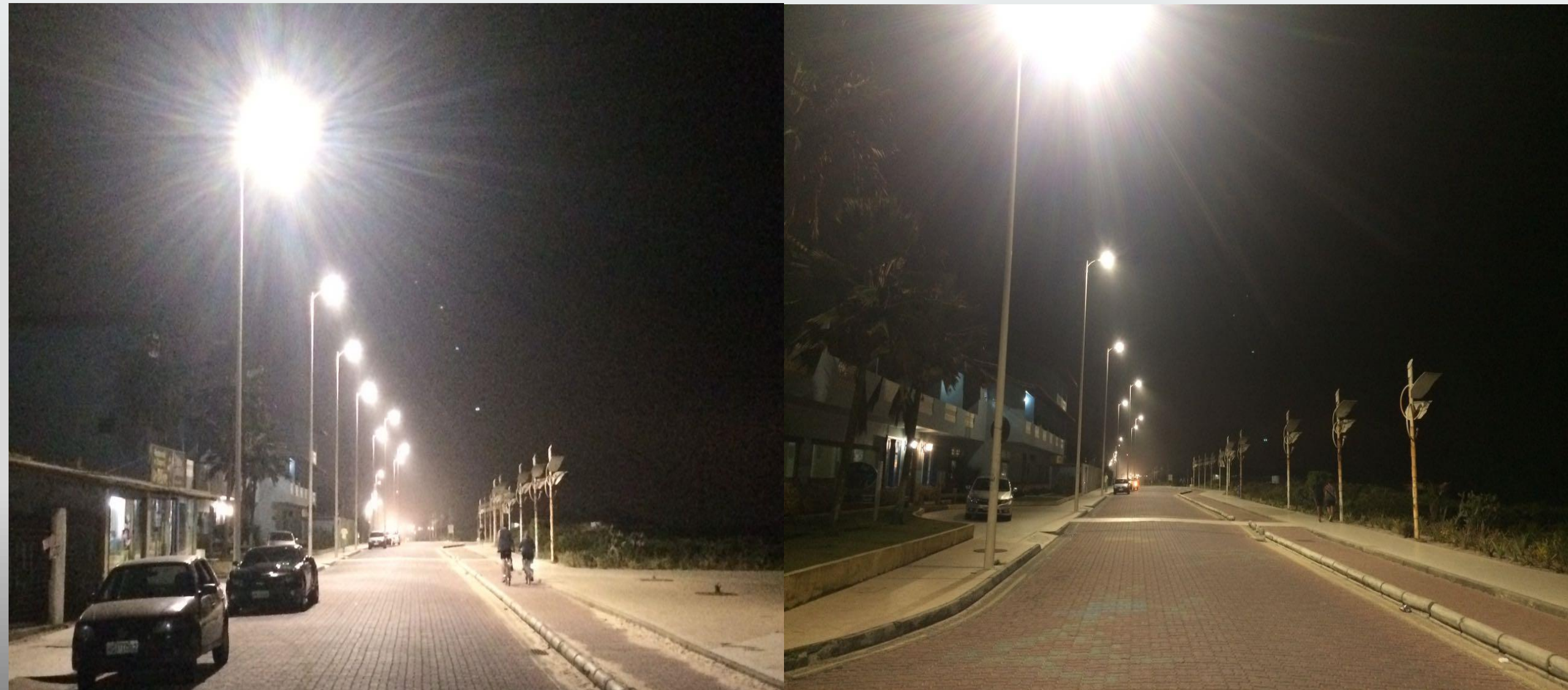
PROJETOS NO BRASIL

Caraguatatuba, SP, Brasil – 20.000 pontos com telegestão

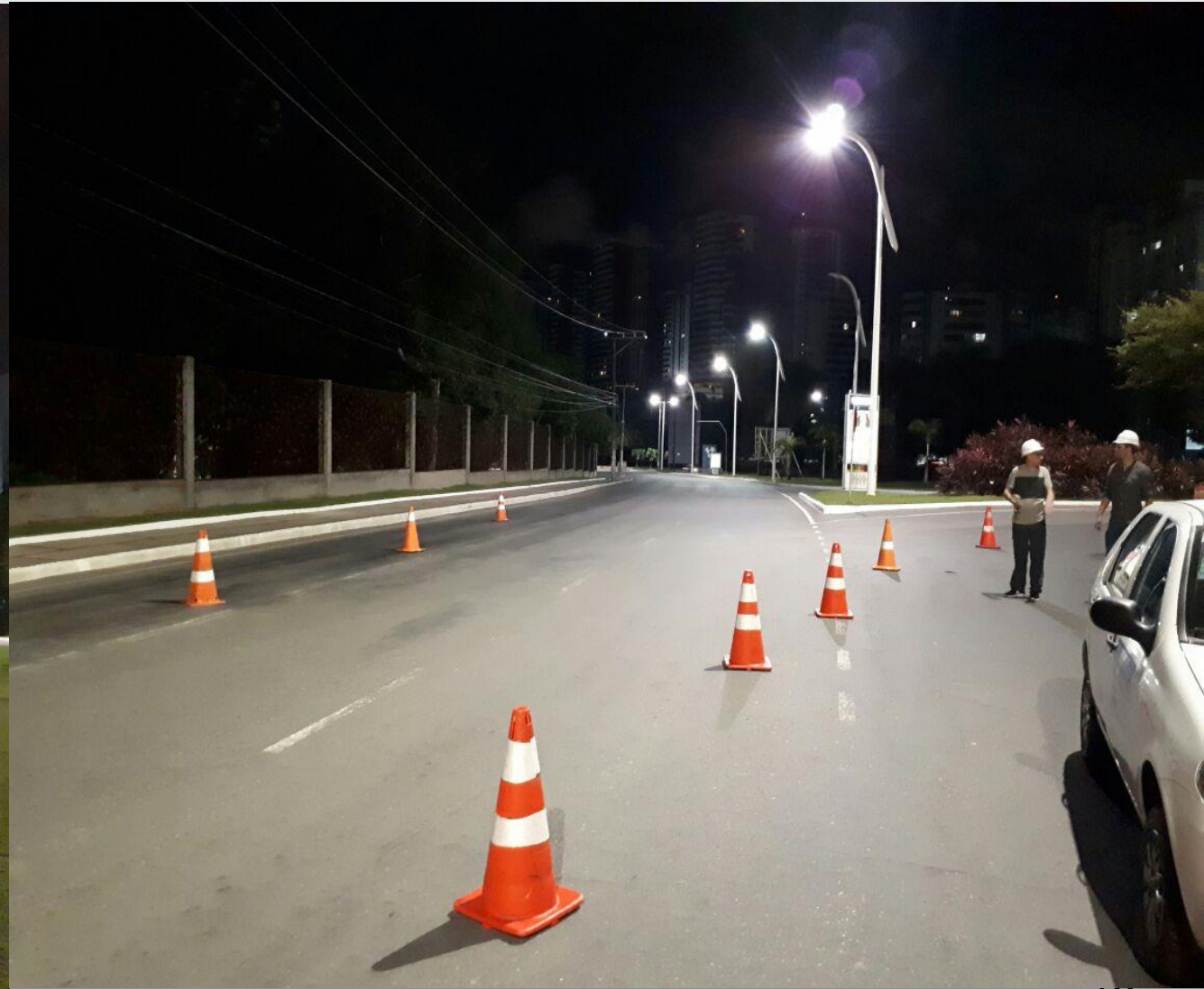




Rio das Ostras, RJ, Brasil – 1.100 pontos com telegestão



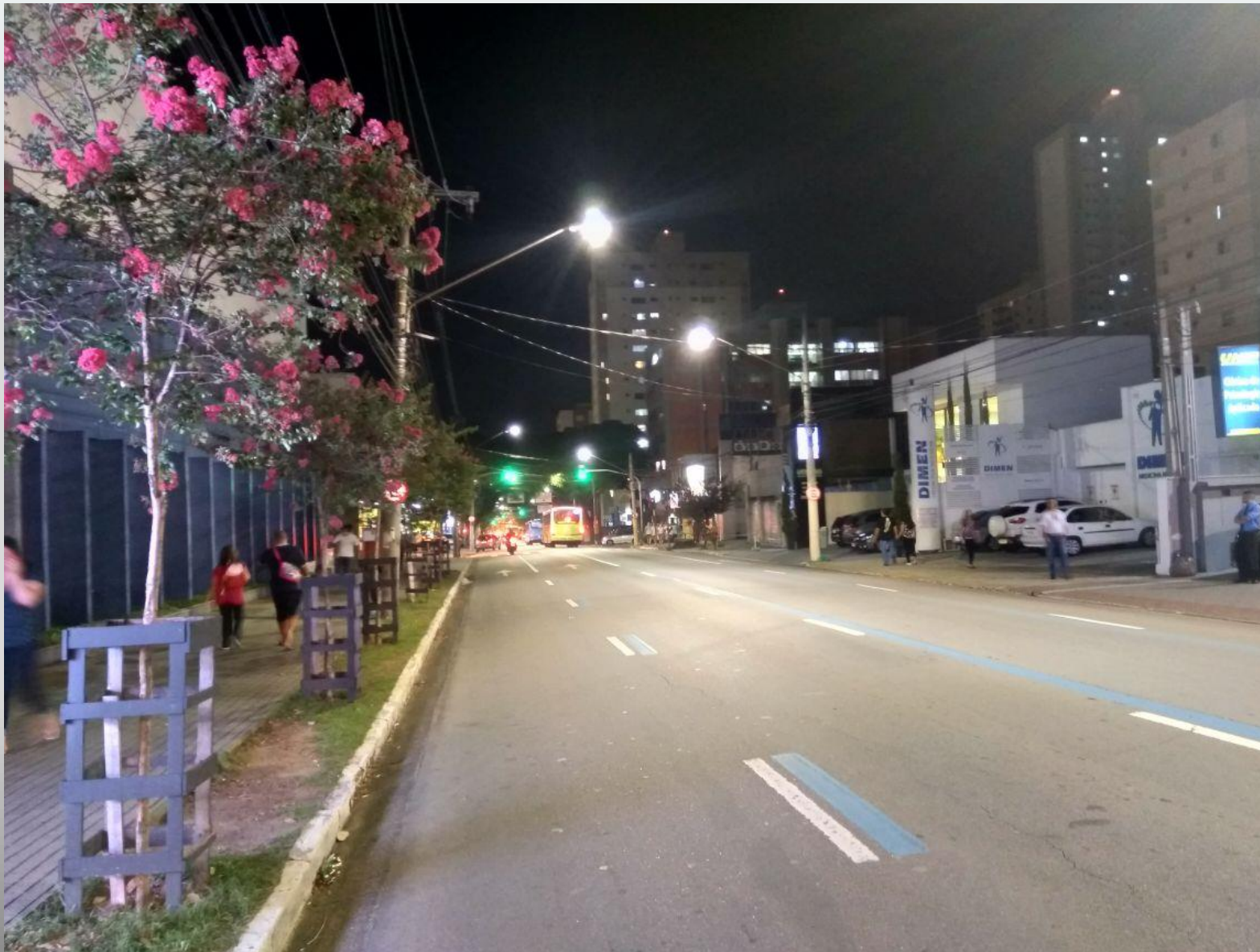
Salvador, BA, Brasil – 130 pontos com telegestão



Ponte da Amizade – 60 luminarias inteligentes



São José dos Campos, SP, Brasil – 40 pontos com telegestão e wifi sem fibra óptica



Demais projetos:

- Contagem/MG: 9.000 pontos
- Inhumas/GO: 1.000 pontos
- Quissamã/RJ: 1.000 pontos
- Matias Barbosa/MG: 250 pontos
- Mauá/SP: 40 pontos com telegestão
- Itaipu: 40 pontos com telegestão, wifi, câmeras, reconhecimento fácil e de objetos sem uso de fibra óptica.



Contatos:

Bruno Gemus

CEO Brasil

bruno.gemus@juganu.com

+55 (62) 98131-3577

www.juganubrasil.com.br

The logo for JUGANU BRIGHTER, featuring the word "JUGANU" in a large, bold, black sans-serif font, with a blue triangle pointing upwards between the 'A' and 'N'. Below "JUGANU" is the word "BRIGHTER" in a smaller, black, all-caps sans-serif font.The logo for JUGANU BRIGHTER, featuring the word "JUGANU" in a large, bold, black sans-serif font, with a blue triangle pointing upwards between the 'A' and 'N'. Below "JUGANU" is the word "BRIGHTER" in a smaller, black, all-caps sans-serif font.

